



# TopBraid Reference Data Manager™

## What's in it for you?

**Up to 50% of data in a typical database is reference data.** TopBraid Reference Data Manager (TopBraid RDM) makes it easy to bring consistency and accuracy to the use of reference data across enterprise applications. It gives end users flexible capabilities to profile, govern, update and provision reference datasets, and supports comprehensive metadata to document the meaning (semantics) of reference data.

### What is Reference Data?

Reference data — essentially lists such as country codes, currency codes and product types — is found in practically every enterprise application including back-end systems, front-end commerce applications, and data warehouses. It turns other data into meaningful business information and provides an information context for the wider world in which the enterprise functions. Yet it is rarely managed well — data duplication and inconsistent mappings across applications lead to costly business errors.

### With TopBraid RDM, enterprises benefit from:

#### Reduction in Costs and Effort

- Reduced maintenance of code tables.
- Reduced costs in the design of code tables for databases.
- Reduced data integration issues due to inconsistent codes.

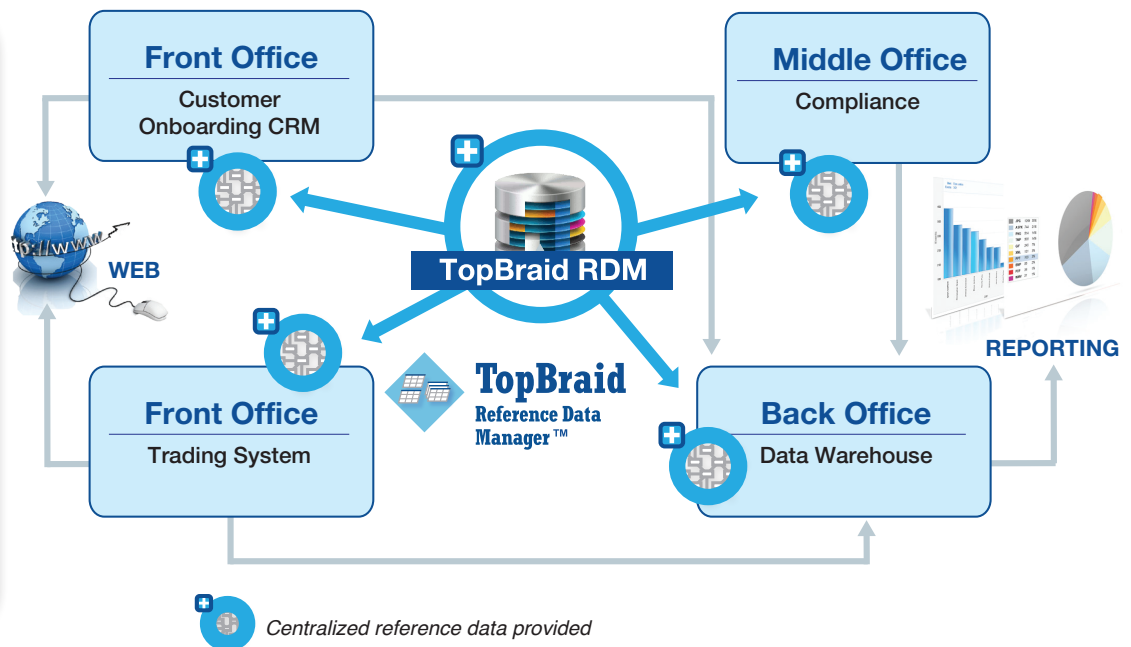
#### Increased Quality and Organization

- Increase in data quality from reduced coding errors.
- Better categorization and organization of data in reporting and analytics by providing a place for report writers to go to better understand the meaning of reference data and how it is used across the different systems.

#### Efficiency in Reference Data

- More informed decisions based on reference data.
- A central system where reference data will “live” and be maintained. With this, maintenance activities such as the addition of new codes are done once, not multiple times.
- An up-to-date source that can be used as input for every code table in every database in the production landscape, enabling greater consistency and easier integration.

### TopBraid RDM™ — Consistent Results

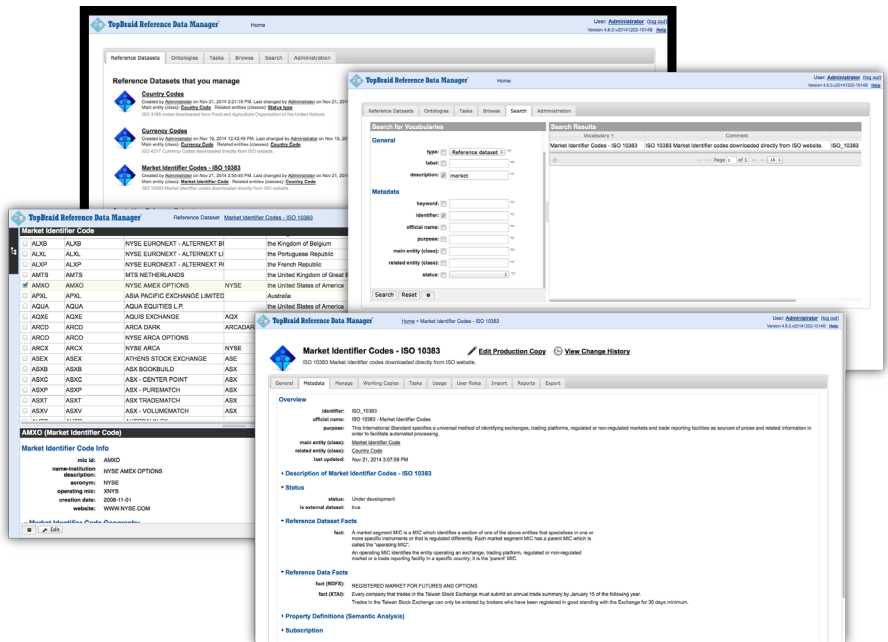




# TopBraid Reference Data Manager™

## Key Functions

- **Intuitive Graphical User Interface** — providing an easy-to-use environment for the business and technical stakeholders
- **Flexible data and relationship modeling** — handles both complex and simple data models and their relationships across domains; captures not only codes, but all relevant associated information
- **Hierarchy management** — supports flat and hierarchical reference data
- **Auditability** — every change is logged; usage records capture where reference data is used
- **Control over versions** — virtual work-in-progress copies of reference datasets allow parallel development of versions and enable controlled publishing, review and approval workflow
- **Collaboration** — through access and accountability based on roles, support for task assignments, statuses and issues
- **Shared semantics** — providing the ability to define and share meaning of all information elements globally and in the context of specific use
- **Crosswalks** — many-to-many mappings between the alternative reference data standards such as NAICS and SIC for industry classification, ICD9 and ICD10 for medical codes or any internal reference datasets
- **Repeatability of on-boarding** — capturing processes and best practices for on-boarding of external reference data



- **Traceability across enterprise** — recording use of reference data across all relevant systems
- **Wide and diverse distribution** — support for a variety of interaction patterns (for example, batch or real-time) and integration approaches
- **Data quality** — offering intuitive forms for creating data validation rules
- **Integration** — with third party systems and Linked Data clouds via web service interfaces and APIs
- **Easy extensibility** — configurable user interfaces, reports, metamodel, import, export, web services and more including deep customizations using TopQuadrant's TopBraid platform
- **Data and modeling standards** — built-in support for W3C standards for data and data models interchange on the web such as RDF and SPARQL
- **Enterprise-readiness** — scalable and robust architecture with LDAP and Enterprise Service Bus integration

## About TopQuadrant

TopQuadrant's standards-based solutions enable organizations to evolve their information infrastructure into a semantic ecosystem, the foundation for intelligent business capabilities and integrated big data. As a result, data can be organized, shared and exchanged regardless of its structure, origin or location.

TopQuadrant customers include many government agencies and Fortune 1000 companies in numerous industries including pharmaceutical, financial services, energy and digital media.

For more information, visit [topquadrant.com](http://topquadrant.com), or contact us at [rdm-info@topquadrant.com](mailto:rdm-info@topquadrant.com) or 919-300-7945.

## TopBraid Products



TopBraid Enterprise Vocabulary Net supports collaborative management of enterprise metadata, business glossaries and taxonomies used in search, content navigation and data integration.



TopBraid Insight is a semantic virtual data warehouse that enables federated querying of data across diverse data sources as if they were in one place.



TopBraid Live is an intelligent business applications server optimized for rapid implementation of solutions that integrate data, content, application services and user interactions.